

VOLUME II

# OUR STAR

A Record of the Year

1926-1927



Published by  
the Senior Class of the  
**STAR VALLEY HIGH SCHOOL**  
Afton, Wyoming



## The Books

BOOK I

**ADMINISTRATION**

BOOK II

**CLASSES**

BOOK III

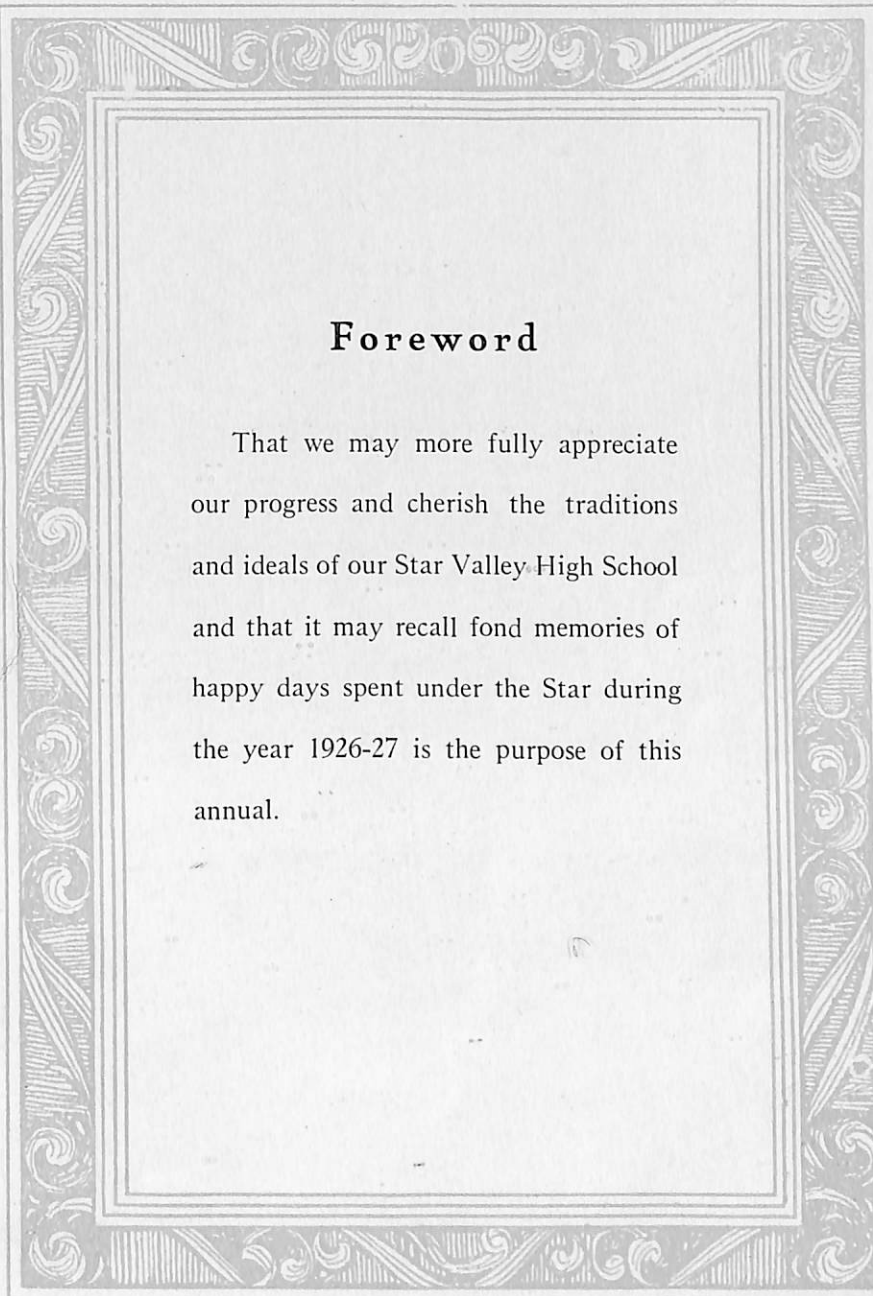
**ACTIVITIES**

BOOK IV

**ORGANIZATIONS**

BOOK V

**FEATURES**



## Foreword

That we may more fully appreciate our progress and cherish the traditions and ideals of our Star Valley High School and that it may recall fond memories of happy days spent under the Star during the year 1926-27 is the purpose of this annual.

## Dedication

TO PRINCIPAL CLARENCE L. BROWN

Our leader, who has for years past guided our ship of fate with a steady hand and at the end of this year again brings us safely into port.

His love of right and ceaseless efforts have opened new fields to new endeavors and higher achievements, and taught us to play the game of life with high ideals and love for all

With a backward glance to our Alma Mater we see that Honor and Glory prevail.



PRINCIPAL CLARENCE L. BROWN

*Clarence L. Brown*



*Star Valley High School  
1926-1929*

### **Crimson and Gold**

When Crimson freely floats above,  
The light is in our eyes.  
Our thoughts soar up to meet its aim,  
Our souls within us rise.  
Each soul beneath those Crimson folds  
Will follow where she leads  
And climb the rough and rugged paths  
To great and noble deeds.  
And as the years speed on,  
She'll ne'er forgotten be,  
For every student's hope and trust  
Remain with our S. V.

### **In Memory--**

Out on the crest  
Of the silvery west.  
Out where the night winds howl,  
O'er the frosty snow  
And wintry craigs.  
Out where the coyotes howl.

There on the breast  
Of that silvery west,  
Is the Star Valley High School dear.  
With Lady Beth's garden  
And the campus green,  
They're memories vivid and clear.

The friendly calls  
Thru the crowded halls  
Are echoes from out the past.  
And the dear old school  
With the Mountain star  
Thru years to come will last.

**Executive Staff**

ALTON LINFORD  
*Editor*

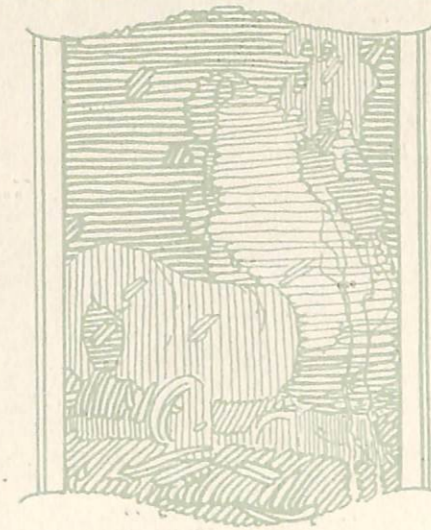
MARGARET BURTON  
*Associate Editor*

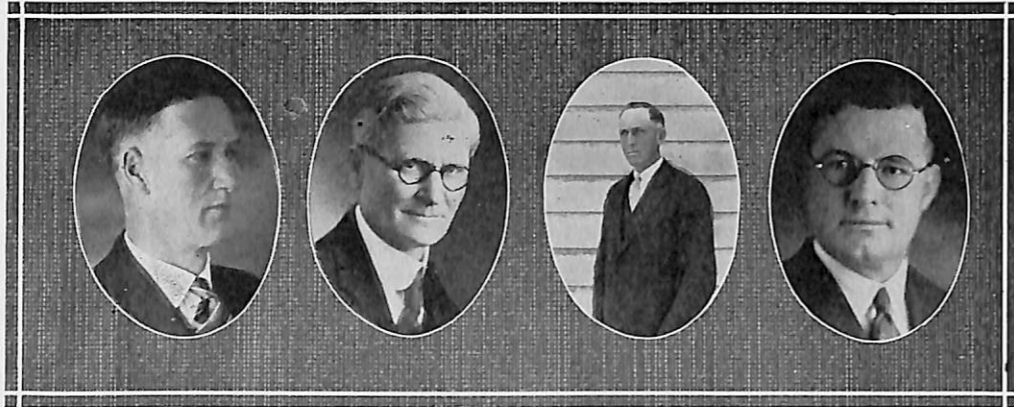
RALPH BROWN  
*Associate Editor*

EVA BURTON  
*Business Manager*

LEAH FRAZER  
*Faculty Advisor*

**ADMINISTRATION**





LINFORD

LYNCH

FINDLEY

MURPHY

**Board of Education**

A. B. MURPHY	Superintendent
A. H. LINFORD	President
D. D. LYNCH	Clerk
HUGH FINDLEY	Treasurer
CARL WALTON	Member
GEORGE MILLER	Member
WILFORD BURTON	Member



GARDNER

CROOK

LANGLOIS

CHRISTENSON

**Faculty**

MARION GARDNER  
*Domestic Art*  
 B. S. U. A. C.

RENO G. CROOK  
*Science, Athletic Coach*  
 B. S. U. A. C.

FONTELLA LANGLOIS  
*History and Social Science*  
 M. A. U. of Idaho

OLE CHRISTENSEN  
*Agriculture and Building*  
 B. S. U. A. C.





BROWN

BURTON

FRAZER

LEE

BROWN

**Faculty**

HAROLD J. BROWN  
*Auto Mechanics*  
B. S. U. A. C.

LEAH FRAZER  
*English, Orchestra*  
B. A. U. of U.

KATHLEEN BURTON  
*Domestic Science*  
B. S. U. A. C.

ELVIRA SEED LEE  
*Normal*  
A. B. & B. E. U. of Colorado

THELMA W. BROWN  
*Music*  
U. of U.



NELSON

THOMPSON

EDWARDS

CLARK

SMITH

**Faculty**

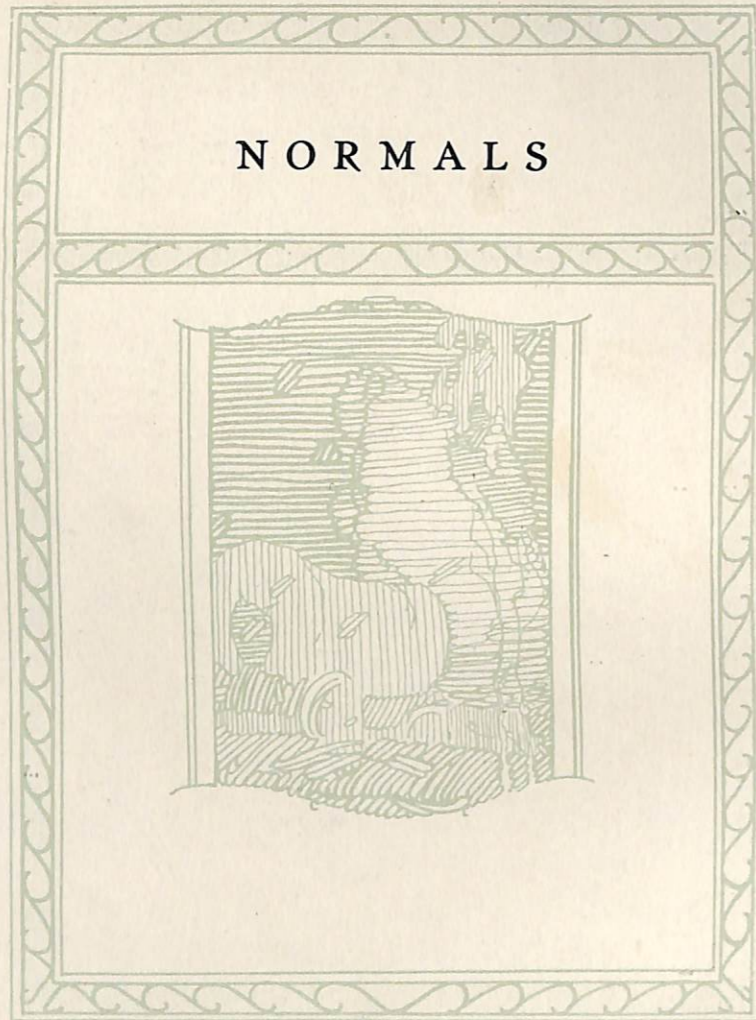
LYLE NELSON  
*Gymnasium, Art, English*  
B. A. B. Y. U

BEATRICE EDWARDS  
*Librarian*

J. BYRON THOMPSON  
*Business Administration*  
B. S. U. of U.

ERNEST R. CLARK  
*Seminary*  
B. S. U. A. C.

ELIAS SMITH  
*Custodian*



FROME      BALDWIN      WOLFLEY      BURTON

**Normals**

OFFICERS

- WILLIAM FROME . . . . . *President*
- BLANCHE BALDWIN . . . . . *Vice-President*
- Mr* ESTHER WOLFLEY . . . . . *Secretary and Treasurer*
- EVA BURTON . . . . . *Normal Reporter*

**The Normal Class**

The Class of '26 has acquired more than can ever be compensated for in dollars and cents and have found that where personal interest is put in real pleasure is forth coming.

Every industry is fed and developed on new ideas. Every fire is kept burning by new fuel, and as student teachers, The Normals may say, "We have taken the step forward and our goal is success."

LADELL SESSIONS



LAVERNE HEPWORTH

JOHN AMES



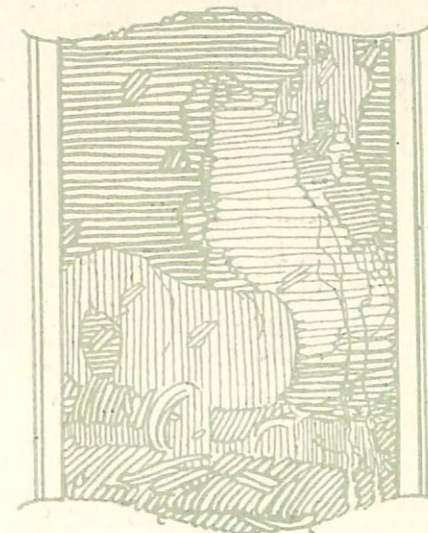
JESSE LEE

LESLIE HARRISON



HENRY FLUCKIGER

SENIORS





PRESTON

BURTON

JENSEN

MALLORY

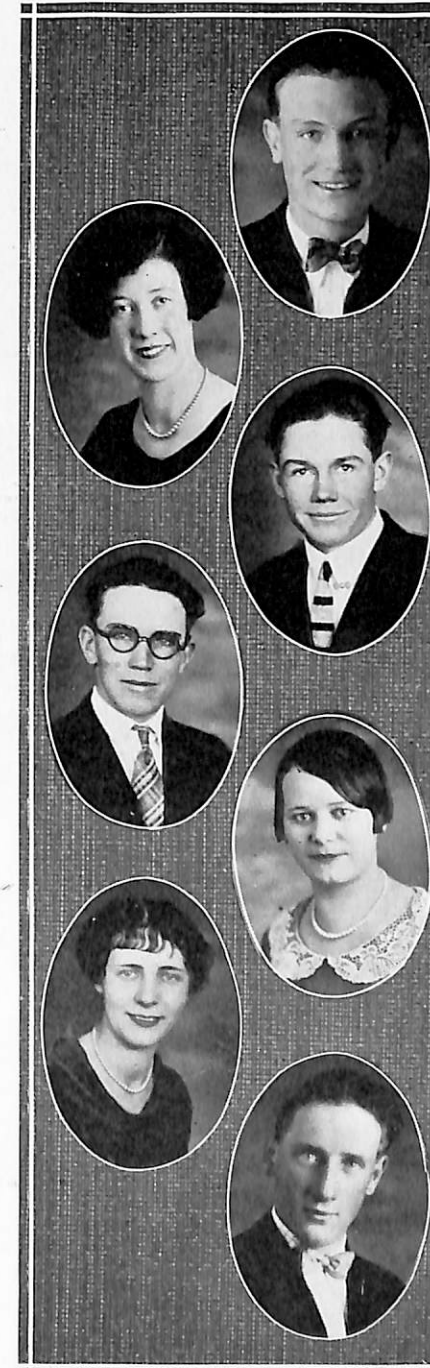
### Seniors

ROYAL PRESTON	President
MARGARET BURTON	Vice-President
ODA JENSEN	Secretary and Treasurer
GEORGE MALLORY	Cheer Leader

### The Seniors Class

The Senior Class is one which has, during their four years in school, led in scholarships and sportsmanship. Ever ready to assist in class and student body activities, they being classed as the major students in activities, who have loyally encouraged those associated with other classes.

We have been the second class in the history of the school to publish a year book. Our Freshman dance and the Junior prom are some of our great achievements.



RALPH BROWN  
Junior Pres., '26; Mt. Star Staff, '26; Tennis, '26; La Pluma Club, '26.

EMMET BOWELS  
Baseball, '23, '24, '25; Prom. Com., '26.

IDELLA MICHAELSON  
Seminary Grad., '27; Ballteam, '24; Student Body Vice-Pres., '27; Glee Club, '27; Musical Rev., '26; Home Ec. Club, '27; Opera, '27; Tennis Club, '24.

ORLAN VAN LEUVEN  
Glee Club, '25, '26, '27; Essay Contests, '25; Cabinet Member, '24.

RUBY SESSIONS  
Class Officer, '24; Year Book, '24, '27; Junior Officer, '26; La Pluma, '27; Staff, '27; English Play, '27.

ARDELLA HOKANSON  
Baseball, '24; Volley Ball, '24; Girls' Club, '25; Musical Review, '26; Economics Club, '27; Seminary Grad., '27.

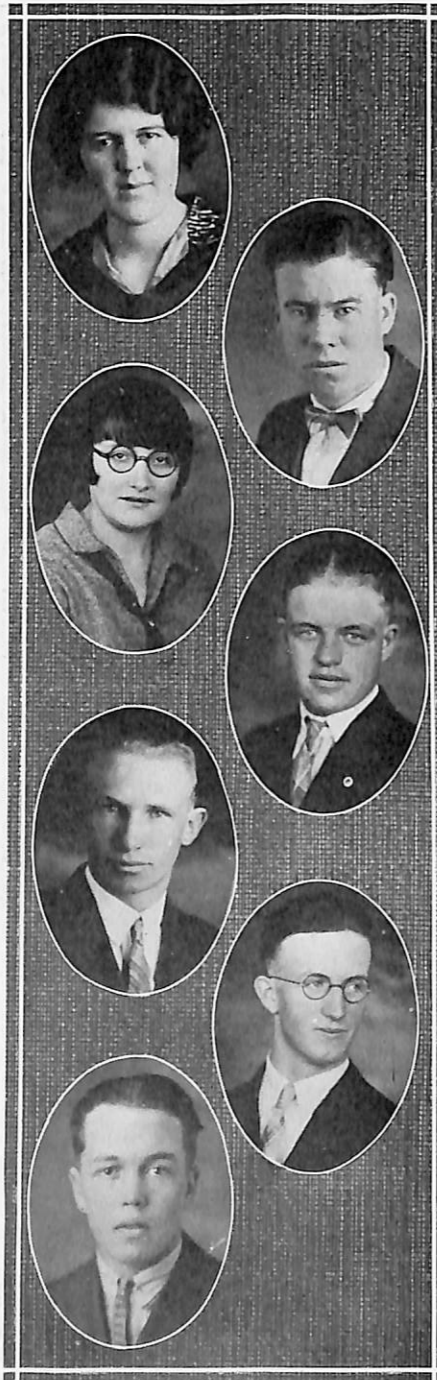
ALTON LINFORD  
Sophomore Pres. Scholarship, '25, '26; Basketball, '25, '26, '27; Baseball; Boxing Medal, '25; Scholarship, '26; Mgr. Athletics, '26; La Pluma, '26, '27; Junior Prom., '26; School Play, '26; Year Book Editor, '27; Class Play, '27; Tennis, '27; Staff, '27; Minstrel, '27; Debating; Glee Club, '27; Seminary Graduate, '26.

LOVINA THURMAN  
Glee Club, '24; Opera, '24;  
Girls' Club, '24; Winner  
in Story Contest, '26.

LOUISE CHILD  
School Play, '24; Spanish  
Club, '23, '24, '25, '26, '27;  
Spanish Play, '27; Glee  
Club, '26, '27.

WILFORD ROBERTS  
Student Body Pres., '27;  
Jun. Athletic Mgr., '26;  
School Basketball, '25, '26;  
'27; Class Tennis, '26;  
Class Play, '27; LaPluma,  
'27; Baseball, '24, '25, '26.

REUEL CALL  
Rifle Club, '23, '24; Band,  
'23, '24, '25, '26, '27;  
Radio Club, '25, '26;  
Seminary Graduate, '26;  
Ag Club, '23, '24.



ARCHIE M. HALE  
Ag. Club, '24, '25, '26;  
Class Debate, '25; Stock  
Judging Team, '25; Prom.  
Com., '26; Basketball,  
'25, '26, '27; Civic Club,  
'25, '26; Cowboy Club,  
'27; State Champion of  
Livestock Club, '26.

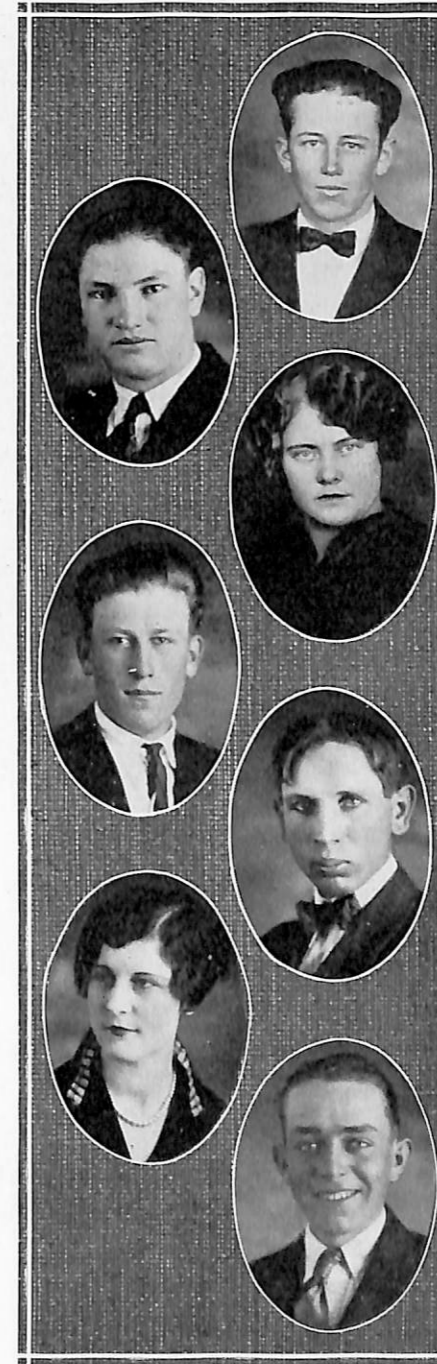
ARDELL AMES  
Ag. Club, '23, '24; Debat-  
ing, '24, '25; Prom. Com-  
mittee, '26; Mt. Star  
Staff, '27; La Pluma, '26,  
'27; Sp. Club, '27; Sp.  
Class Play, '27; Class  
Play, '27.

CHARLES B. HALE  
Winner U. P. Scholar-  
ship (Smith-Hughes) Lin-  
coln Co. Dept., '26; Civ-  
ics Club, '25, '26; Band,  
'27; Hiking Club, '27;  
Cowboys' Club, '27.

LLOYD GARDNER  
Class Officer, '24, '25; Male  
Glee, '24, '25, '26, '27;  
Opera, '24, '25, '26, '27;  
School Play, '25, '26; Mt.  
Star Staff, '27; H. S.  
Quartette, '27; Minstrel,  
'27; Scholarship, '24; La  
Pluma Club, '27; Semi-  
nary Graduate, '27; Class  
Play, '27.

HERBERT EDWARDS  
Rifle Club, '24; Ag. Club,  
'26; Class Debating, '27;  
Seminary Graduate, '26.

WINONA MILLER  
Freshman Officer, '23, '24;  
Class Play, '27; Mt. Star  
Staff, '27; Girls' Club, '25;  
La Pluma Club, '27;  
Prom. Com., '26; Semi-  
nary Graduate, '27; Year  
Book Staff, '27.



OTHELLO BROWN  
Baseball, '24, '25, '26;  
Stock Judging Team, '26;  
Glee Club, '26, '27; Opera,  
'27; Minstrel, '27; Class  
Play, '27; Mt. Star Staff,  
'27.

EVELYN RICH  
Basketball, '24; Volley  
Ball, '24; Tennis Club,  
'24, '25; Girls' Club, '24,  
'25; Musical Review, '26;  
Home Ec. Club; Semi-  
nary Graduate, '27.

RICHARD BURTON  
Basketball, '26, '27; Male  
Glee, '27; Minstrel, '27.

GARLAND TOLAND  
Radio Club, '24, '25; Box-  
ing Medal, '25; Class Of-  
ficer; Glee Club, '26, '27;  
Mt. Star Associate Edi-  
tor, '27; Opera, '26; Min-  
strel, '27; Basketball;  
Class Play, '27.

FRED STOFFERS  
 Editor Mt. Star, '27;  
 Basketball, '24; '27; Ten-  
 nis, '26; La Pluma Club,  
 '27; Athletic Mgr., '25;  
 Student Body Officer, '27;  
 Band, '23, '26; Junior  
 Prom., '26.



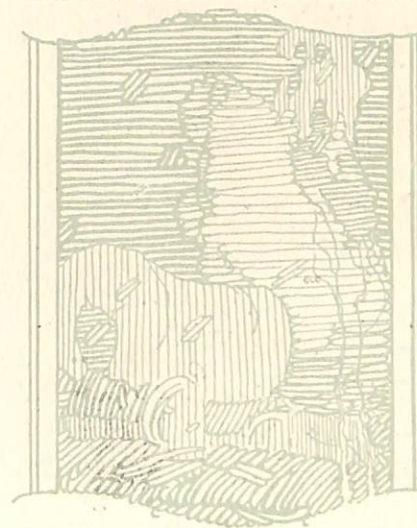
PAULINE SCHWAB  
 Volley Ball, '24; Girls'  
 Club, '25; Home Ec.  
 Club, '27; Seminary  
 Graduate, '27.

GENE BARRUS  
 Baseball, '24, '25; Class  
 Officer; Radio Club; Glee  
 '26, '27; Opera, '26; Prom.  
 Committee, '26; Class  
 Play, '27; Minstrel, '27;  
 La Pluma Club, '27; Mt.  
 Star Staff, '27.

WILLARD BRUCE  
 Ag. Club Officer, '24;  
 Tennis, '24; Baseball, '24,  
 '26; Band, '25, '27; Glee  
 Club, '26, '27; Opera, '26;  
 Glee Club Officer, '27;  
 Mt. Star Staff, '27; Min-  
 strel, '27; Class Play, '27.  
 Debating, '27.

IRENE LEWIS  
 Spanish Club, '24, '27.

## JUNIORS





NIELD

WOLFLEY

BALDWIN

WHITE

**Juniors**

OFFICERS

- |               |                         |
|---------------|-------------------------|
| WILLARD NIELD | President               |
| ANNIE WOLFLEY | Vice-President          |
| LARUE BALDWIN | Secretary and Treasurer |
| MONDELL WHITE | Cheer Leader            |

**The Junior Class**

"Keen disappointments may have the power to shatter our loftiest hopes, but they cannot destroy the splinters of faith that kindle new fires of ambition."



VERDA CAZIER

MELNOT HOLBROOK

ARZELLA THATCHER

RONALD ALLRED

MARY GARDNER

DUARD ERICKSON

EVA JENKINS

DEWEY CAMPBELL



DELLA HÖPPES

GRACE LANCASTER

HOWARD WILKES  
*Died 1932*

ESPECA ROBERTS

BILL LYNCH  
*Died 1930*

AMY WEBER

NORMA JENKINS



WARREN ALLRED

BERT LINFORD

THELMA HARRISON

LEAH TAYSON

HYRUM ANDERSON

MARGUERITE  
GARDNER



LAVERLE STOFFERS



ERMA TAYSOM



ALVIN FLUCKIGER



CLARENCE HALE



MARJORIE LYNCH  
*Died 1930*



JASPER CLARK



LILY STOCKS

BESSIE HALE



ARVID McCOMBS



FRANCIS JOHNSON



JAY HEPWORTH



JOSEPH HILLSTEAD



ORENE ALLRED



GENEVIEVE NIELD



OLIVER BALDWIN



VINCENT BOWLES



VERDA HALE



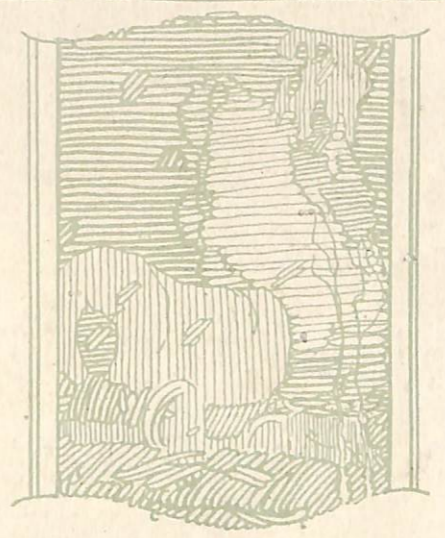
OLIVE GARDNER



JESSE HEPWORTH



SOPHOMORES





SESSIONS

WOOD

BALDWIN

BENNION

### SOPHOMORES

MARVIN SESSIONS . . . . . *President*  
 ELGIN WOOD . . . . . *Vice-President*  
 EVA BALDWIN . . . . . *Secretary and Treasurer*  
 CLARA BENNION . . . . . *Cheer Leader*

#### The Sophomore Class

“The world is made up of two great classes of people  
 —those who want success, and wish for it, and those  
 who want success and wade right in and work for it.”



VÍCTOR LEE  
*DS2*

MELBA KENNINGTON

MYRTLE LINFORD

RUTH  
 KELLERSBERGER

ROLLA LOW

RACHAEL BURTON

ELNO DRANEY

ZELDA EGGLESTON



LOUISE HARRISON



LOWELL JENSEN



MELBA JENSEN



RAOUL CALL



ENNA LUTHI



WALTER CLARK



GEORGE WEST  
*227*



LEAH WRIGHT



MYRTLE NIELD



BEATRICE CALL



FIELDING BURTON



GRACE HYDE



GEORGE CROSLY



ARVILLA HUMPHRIES



CLIFFORD BURTON



ANNA  
NEUENSCHWANDER



ALTHEA PRESTON



HUBERT BURTON



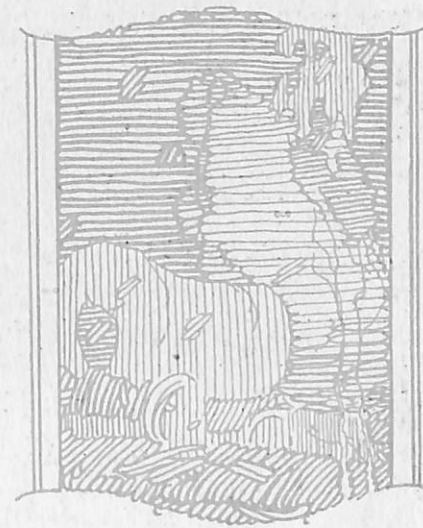
LEONA WALTON



RUTH WOLLENZIEN



FRESHMEN





HALE

GARDNER

WRAY

GARDNER

**FRESHMEN**

OFFICERS

- NATHAN HALE . . . . . *President*  
 MARTHA GARDNER . . . . . *Vice-President*  
 RAMONTE WRAY . . . . . *Secretary and Treasurer*  
 ORRIN GARDNER . . . . . *Cheer Leader*

**The Freshmen Class**

“Vim, vigor and vitality are bundled up in a good start.”

“So pronounced is the advantage of a good start that a poor start often courts discouragement and defeat.”

“While a good start usually means an early start—an early start does not necessarily mean a good one unless backed up by the “do or die” spirit of the conqueror.”

EVA CHADWICK

DORA HARRISON

DORA HARMON

LUCY PETERSON

BERNARD LEWIS

ADA HURD

GRACE HENINGER

VIOLA WELSHMAN

HELEN GRAHAM

WILFORD HALE

MABEL YEAMAN

MERL BARKER





AVA PROCTOR

GRACE FROME

GLENA NIELD

VERA HOOPES

KENNETH ROOS

LOUISE TAYSOM

MAUDE TAYSOM

HAZEL ANDERSON

LENA PETERSON

RALPH ASTLE

RUTH DABEL

ROY CAZIER

CLARISSA KENNINGTON

BERNICE KENNINGTON

ELDON HYDE

ARTHUR ROBERTS

ALTHEA STOFFERS

MAURINE MICHAELSON

ELDA KENNINGTON

RUTH BURTON

ALMA WILLIAMSON

FLOYD BAGLEY

VIVIAN CALL

WILDA HOLLBROOK



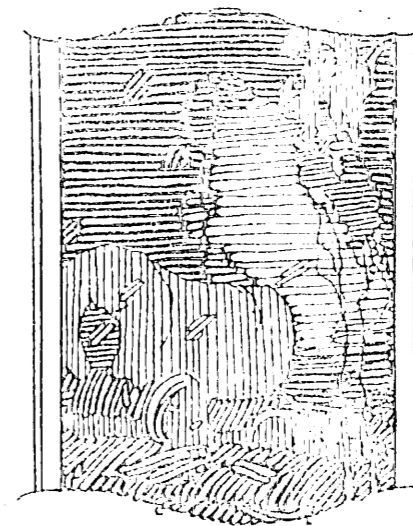
## Last Will and Testament

We the Class of 1927, Star Valley High School, Afton, Lincoln County, Wyoming, U. S. A., having accomplished our mission here in school and successfully negotiated, (in our estimation) the required four years, on the event of our departure do hereby solemnly swear to this, our last will and testament, at the same time declaring all promises and resolutions previously made by us, null and void until such time as we see fit to carry them through.

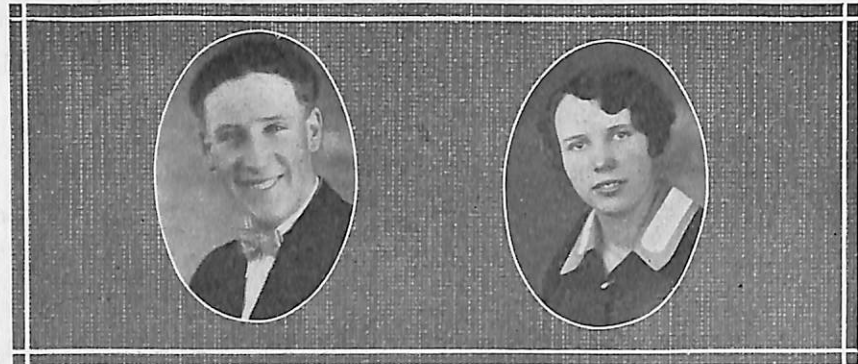
*We do jointly will and bequeath:*

- First: To the school as a whole we leave our sincere cooperation.
- Second: To Superintendent Murphy the tennis court to use during the months of December, January and February.
- Third: To the faculty the privilege to insist that the students go up the south stairs and down the north.
- Fourth: To the Juniors: the opportunity to rebuild the Senior Class's reputation after our departure.
- Fifty: To the Sophomores Lady Beth's Cosmos on condition that they keep them well supplied with water and insist that the freshmen refrain from eating lunches in the vicinity.
- Sixth: To the Freshmen, our most sincere hope that they are not completely annihilated by the annual onslaughts of the Sophomores.
- Seventh: To the Normals—Freedom to roam at random throughout the grade school building during classes.
- Eighth: To the Janitors: Our test papers for the year 1927 and our uncanny love of cleanliness.
- Ninth: To the Board—The right to settle all disputes that may arise between the students and the faculty.
- Tenth: To Miss Frazier—The head of Swift Creek canyon that she may practice violin lessons undisturbed.
- Eleventh: To the High School Band——? Give up.

## ORGANIZATIONS AND ACTIVITIES







LINFORD

BURTON

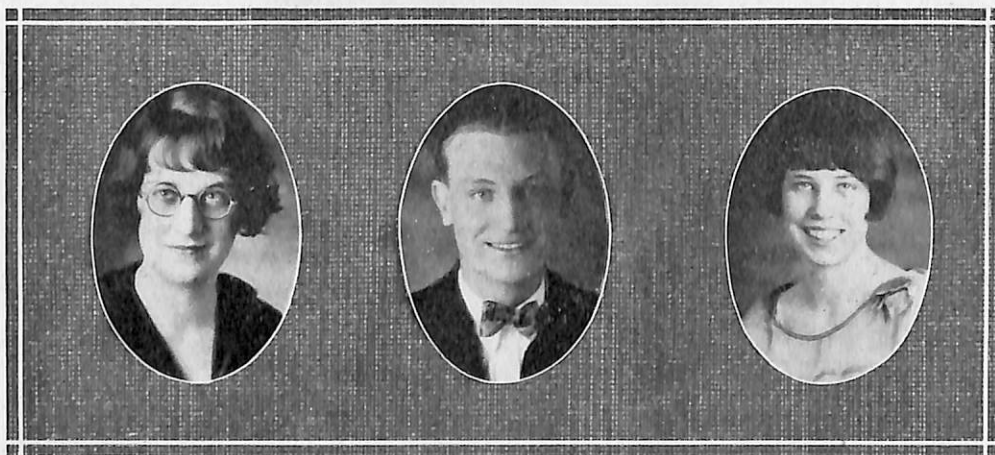
OUR STAR STAFF

Alton Linford . . . . .	<i>Editor</i>
Eva Burton . . . . .	<i>Business Manager</i>
Margaret Burton . . . . .	<i>Associate Editor</i>
Ralph Brown . . . . .	<i>Associate Editor</i>
Leah Frazer . . . . .	<i>Faculty Advisor</i>

The purpose of Our Star Staff in publishing this book was to give the students a record of the year 1926-'27, and to present their activities and accomplishments during the past year.

By editing this year book the staff, and the co-operating students place the second annual in the history of the Star Valley High School on record.

THE STAFF.



FRAZER

BROWN

BURTON



Stoffers

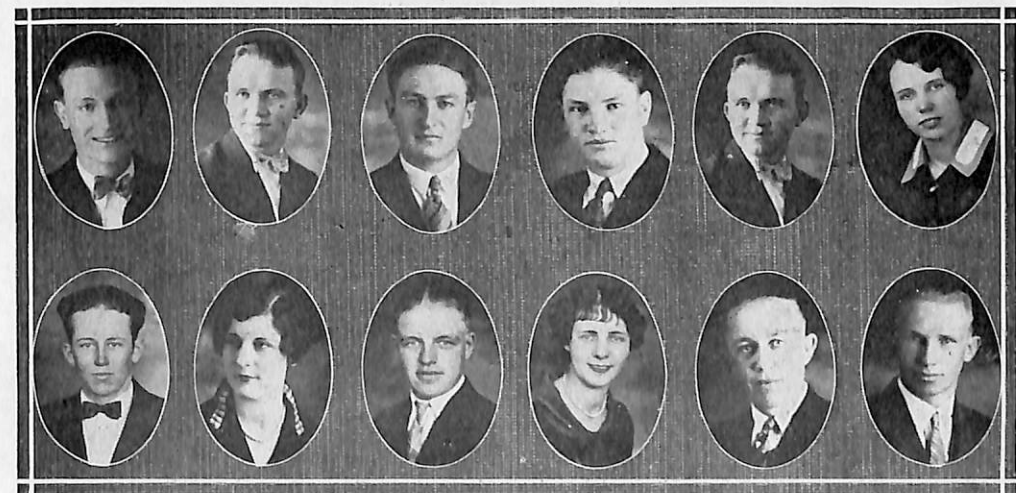
Toland

Linford

Frazer

MOUNTAIN STAR STAFF

Fred Stoffers . . . . .	<i>Editor</i>
Garland Toland . . . . .	<i>Associate Manager</i>
Alton Linford . . . . .	<i>Business Manager</i>
Leah Frazer . . . . .	<i>Faculty Advisor</i>
Ruby Sessions . . . . .	<i>Circulation Manager</i>



Reporters

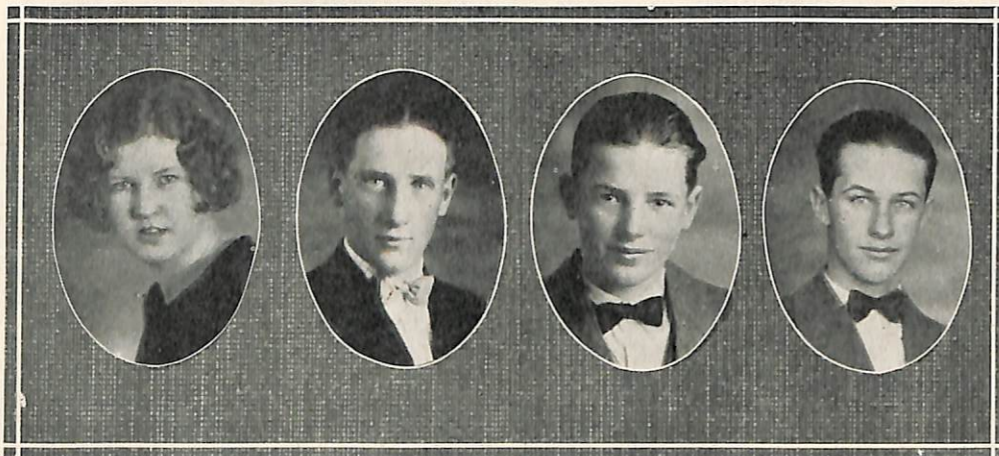
Brown	Hepworth	Preston	Gardner	Barrus	Burton
Brown	Miller	Ames	Sessions	Bruce	Roberts



ROBERTS      MICHAELSON      STOFFERS      LINFORD

**STUDENT BODY OFFICERS**

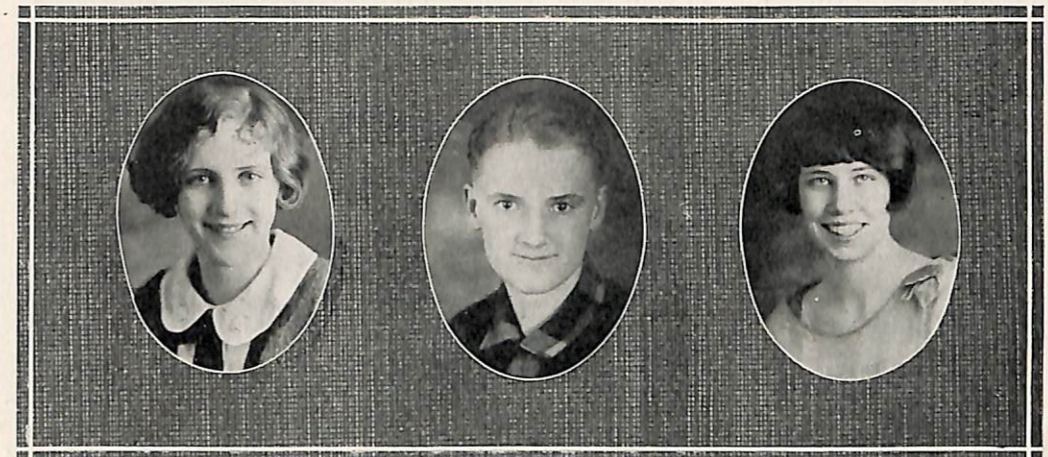
Wilford Roberts . . . . .	<i>President</i>
Idella Michaelson . . . . .	<i>Vice-President</i>
Fred Stoffers . . . . .	<i>Secretary and Treasurer</i>
Alton Linford . . . . .	<i>Athletic Manager</i>



GARDNER      LINFORD      BALDWIN      JENSEN

**DEBATING TEAM**

<i>Affirmative</i> . . . . .	Mary Gardner Alton Linford
<i>Negative</i> . . . . .	Oliver Baldwin Lowell Jensen



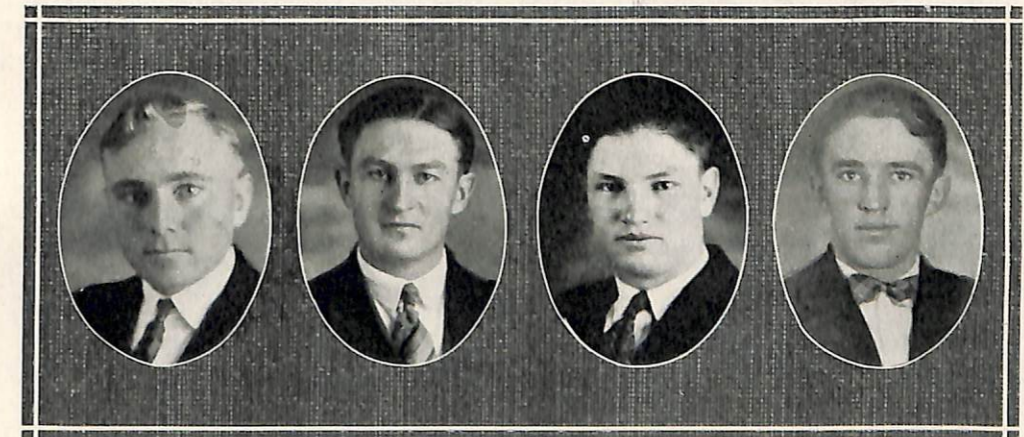
BENNION      LYNCH      BURTON

TRIO

Clara Bennion . . . . .	<i>Soprano</i>
Marjorie Lynch . . . . .	<i>Second Soprano</i>
Margaret Burton . . . . .	<i>Alto</i>

MALE QUARTETTE

Mondell White . . . . .	<i>First Tenor</i>
Royal Preston . . . . .	<i>Second Tenor</i>
Lloyd Gardner . . . . .	<i>First Bass</i>
Ronald Allred . . . . .	<i>Second Bass</i>



WHITE      PRESTON      GARDNER      ALLRED



IDELLA MICHAELSON  
*Piano Winner*

ARCHIE HALE  
*Livestock and Forage State  
Champion*

FRED STOFFER  
*Type Winner*

CHARLES HALE  
*Union Pacific Scholarship*

POPULARITY CONTEST

JOHN AMES

ENNA LUTIII

ABRAHAM LINCOLN

*"A house divided against itself cannot stand."*—Abraham Lincoln.

ZELDA EGGLESTON,  
*Winner of Lincoln Medal Essay.*

This was the opinion of Abraham Lincoln, the sixteenth president of the United States. He, our faithful leader, was born February 12, 1809, Hardin County, Kentucky.

At the death of Lincoln's mother she called him to her bedside and said, "My boy, I am going away, and you will not see me again. Be good—I know you will. Help your father, take good care of your sister. Live as I have taught you, and love God always." Throughout his life he endeavored to do the will of his angel mother. As years passed Lincoln having won honor and fame said, "All that I am and all that I hope to be, I owe to my angel mother." Such respect as this, few of us give to our mothers.

Lincoln is known throughout the world for his honesty and kindness. Wherever our brave president saw that a seed was needed, it was there he was ready to plant it. Patience and time he always gave where it was needed.

He was popular, though a homely speaker at political meetings. At the time he gave his speeches, little was thought of them, many were said to have been a complete failure. But today the speeches once considered a failure are the greatest to be found. "Gettysburg Address," was said to be, "A great disappointment," by Mr. Seward. But today it has taken rank among the classics of the world; it is read and admired by all today.

Very early in life Lincoln turned his mind against slavery. In the year 1860 he was elected president. Shortly after his election the Civil War began. With but few enemies he was again re-elected to his second term of President.

"It was stated that they were not fighting for slavery, but for Independence; and that, or extermination, they would have." Thus Lincoln had his reason for saying "A house divided against itself cannot stand." He realized that the government could not endure half slave and half free. Nor could one stand apart from the other.

Friday, the fourteenth of April, 1865, as the date well to be remembered in history, Lincoln our beloved president, was assassinated while attending a theater at the National Capital and died April 15, 1865. At the announcement of his death the whole nation wept for him. Now they realized what a wonderful man he was, how great his intellect, how tender his heart, how tender all his acts, Abraham Lincoln.



### Ladies' Glee Club

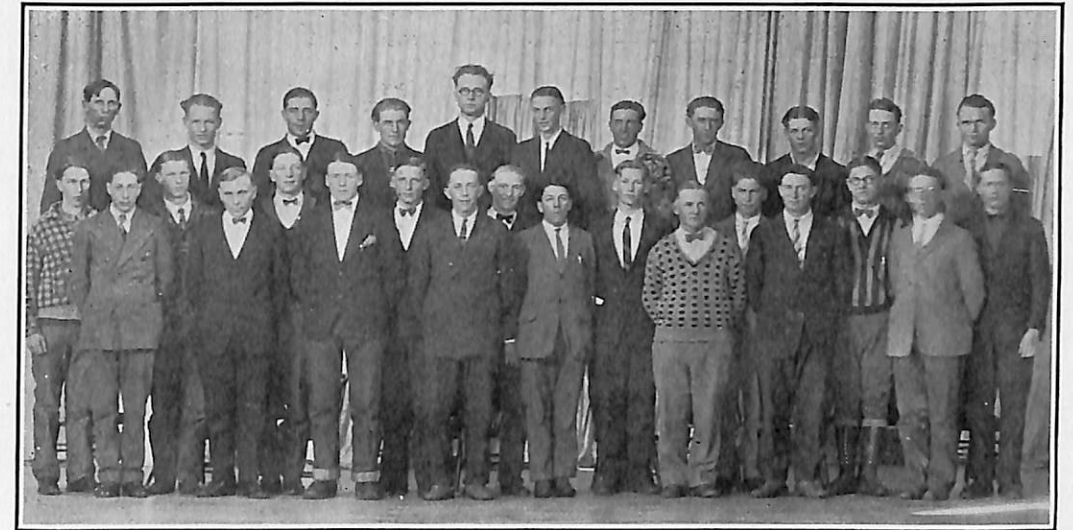
The Girls' Glee Club have had a very successful year under the leadership of President Olive Gardner, Vice-President Erma Taysom, and Secretary and Treasurer, Marjorie Lynch.

Our Glee Club colors are black and white. We have used these colors for our uniforms, and many have been the compliments the girls have received in wearing them.

We have appeared many times, and each appearance has called for another one, to satisfy the audience.

One of the biggest events, was the visit of the Kemmerer Band, who gave a delightful concert, assisted by both Glee Clubs. A contest was held between the Male and Girls' Glee Clubs to see who could sell the most tickets for the event. The Male Glee won, and as a result, we had a mid-year banquet, given by the Girls' Glee, in honor of the Male Glee.

However the outstanding feature of the year was the presentation of the "Bohemian Girl" by both Glee Clubs.



### Male Glee

The Male Glee is the veteran organization of the music department. The music department has continued to grow during the year 1926-27. The piano enrollment quickly reached capacity in the fall and many were turned away. Violin instruction has been re-introduced and enough students enrolled to assure the formation of a school orchestra next year. The two glee clubs have continued their excellent work. This year the Male Glee, veteran organization of the department, besides doing its share in "THE BOHEMIAN GIRL," presented a Negro Minstrel that was much appreciated in both valleys.

<i>First Tenor</i>	<i>Second Tenor</i>	<i>First Bass</i>	<i>Second Bass</i>
Bill Lynch	Willard Bruce	Lloyd Gardner	Gene Barrus
LaDell Sessions	Fielding Burton	Orrin Gardner	Ronald Allred
Marvin Sessions	John Ames	Othello Brown	Joe Hillstead
Benard Lewis	Dewey Campbell	Victor Lee	Richard Burton
Mondell White	LaVerl Stoffers	Willard Nield	George Mallory
Walter Clark	Alvin Fluckiger	Orlan VanLeuven	
Royal Preston	Wilford Hale	Afton Linford	
	Nathan Hale		
	Clarence Hale		



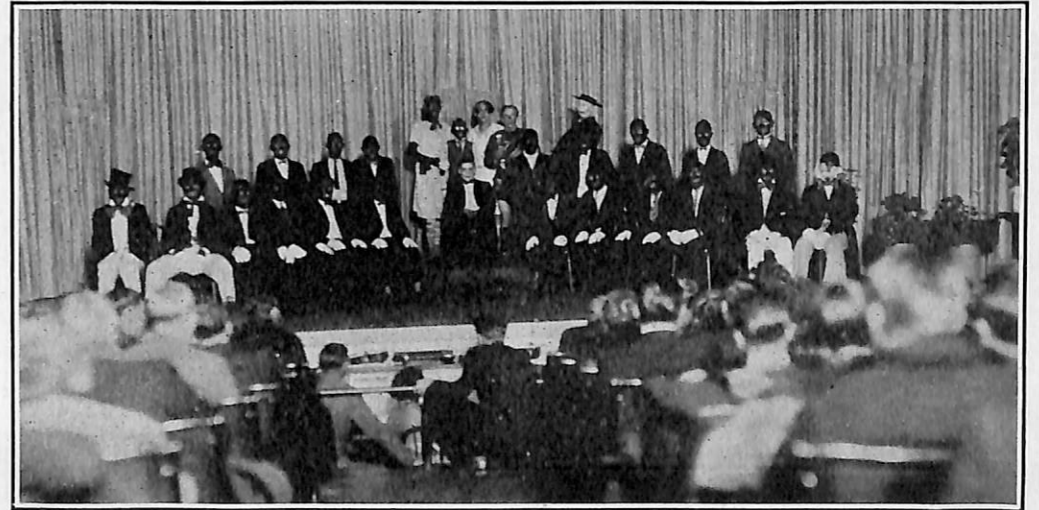
ORCHESTRA



PIANO CLASSES



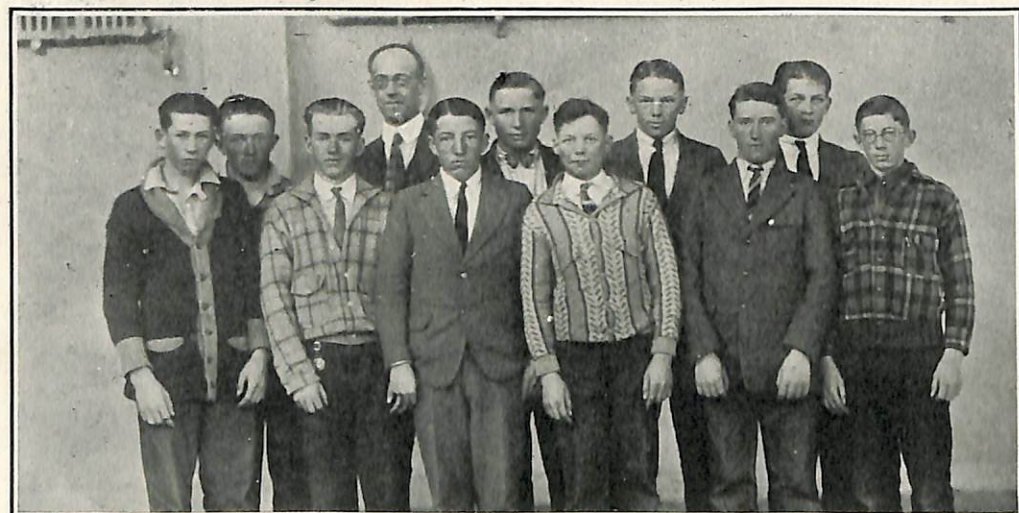
DANCING CLASS



MINSTREL



COWBOY CLUB



THE ROCKY MOUNTAIN CLUB



"ADVANCED TYPE CLASS"



SPANISH CLUB



NEW TESTAMENT CLASS



CHURCH HISTORY CLASS



SEMINARY GRADUATES



OLD TESTAMENT CLASS

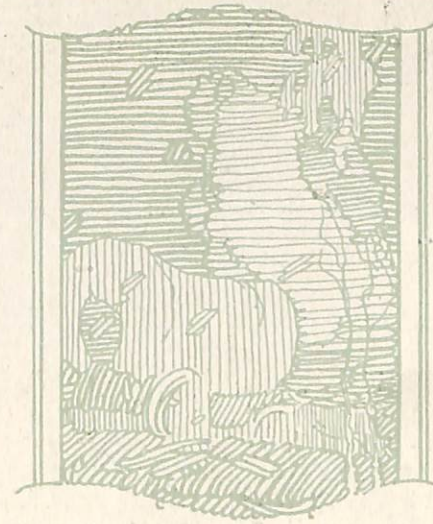


HIKERS' CLUB



GIRLS' CLUB

## ATHLETICS







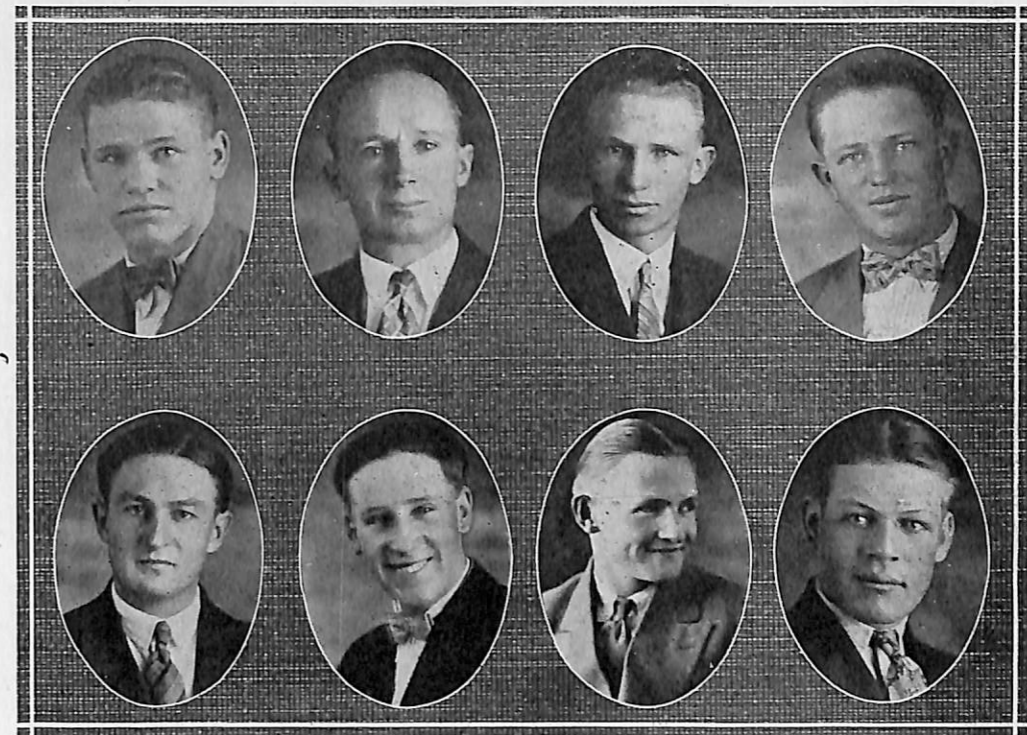
BASKETBALL TEAM

Mallory, Preston, Hale, Roberts, Erickson, Linford, Dabel, Hillstead, Johnson, Crook,  
Sessions, Stoffers

### Athletics

Basketball was the major sport at the Star Valley High School during the year 1926-27. This sport saw one of its most successful years this season, not because more games were won but because of the progress made in the development of teams and players. The new Gym is responsible for a large share of the Basketball spirit among the players and school; the attitude of the squad can be held responsible for the rest.

The biggest disappointment of the year came when the team learned that they would not go to the State Tournament at Laramie. Though this was a hard blow, the players all bid adieu with regrets, to the uniforms that have brought them a successful year.



STOFFERS  
PRESTON

CROOK  
LINFORD

ROBERTS  
MALLORY

ERICKSON  
HILLSTEAD

### Basketball Team

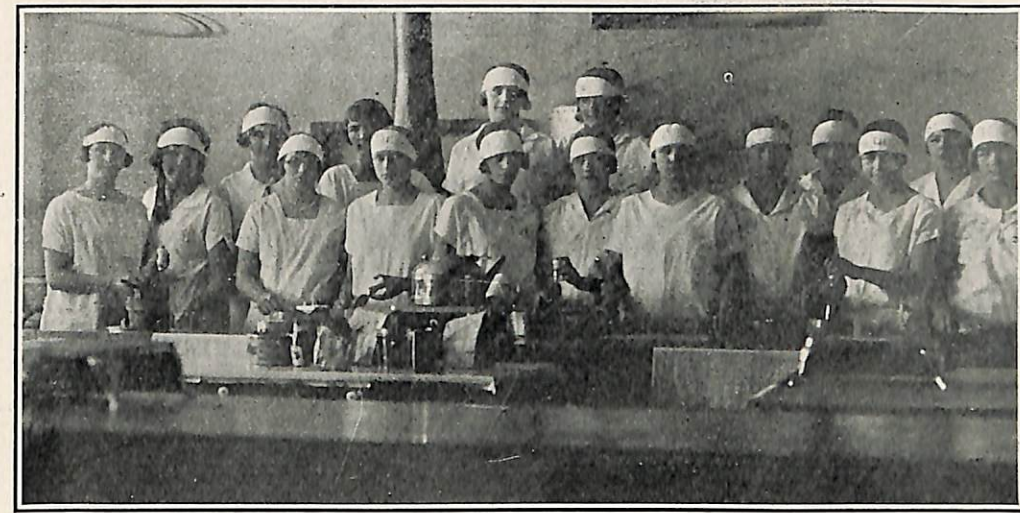
Wilford Roberts	Center
Reno G. Crook	Coach
Fred Stoffers	Guard
Duard Erickson	Forward
Royal Preston	Guard
Alton Linford	Forward
George Mallory	Forward
Joe Hillstead	Guard



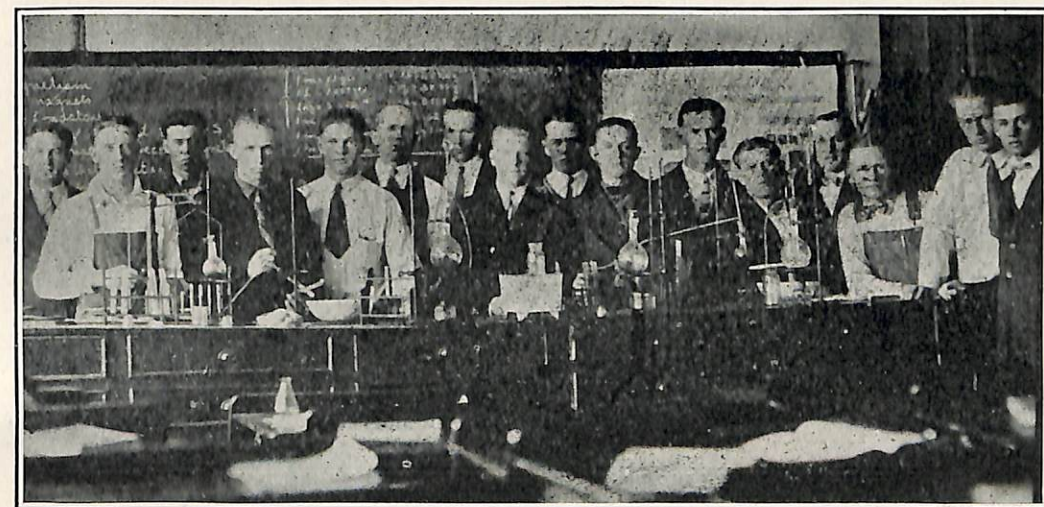
SEWING PICTURE



AUTO MECHANICS



HOME ECONOMICS



CHEMISTRY

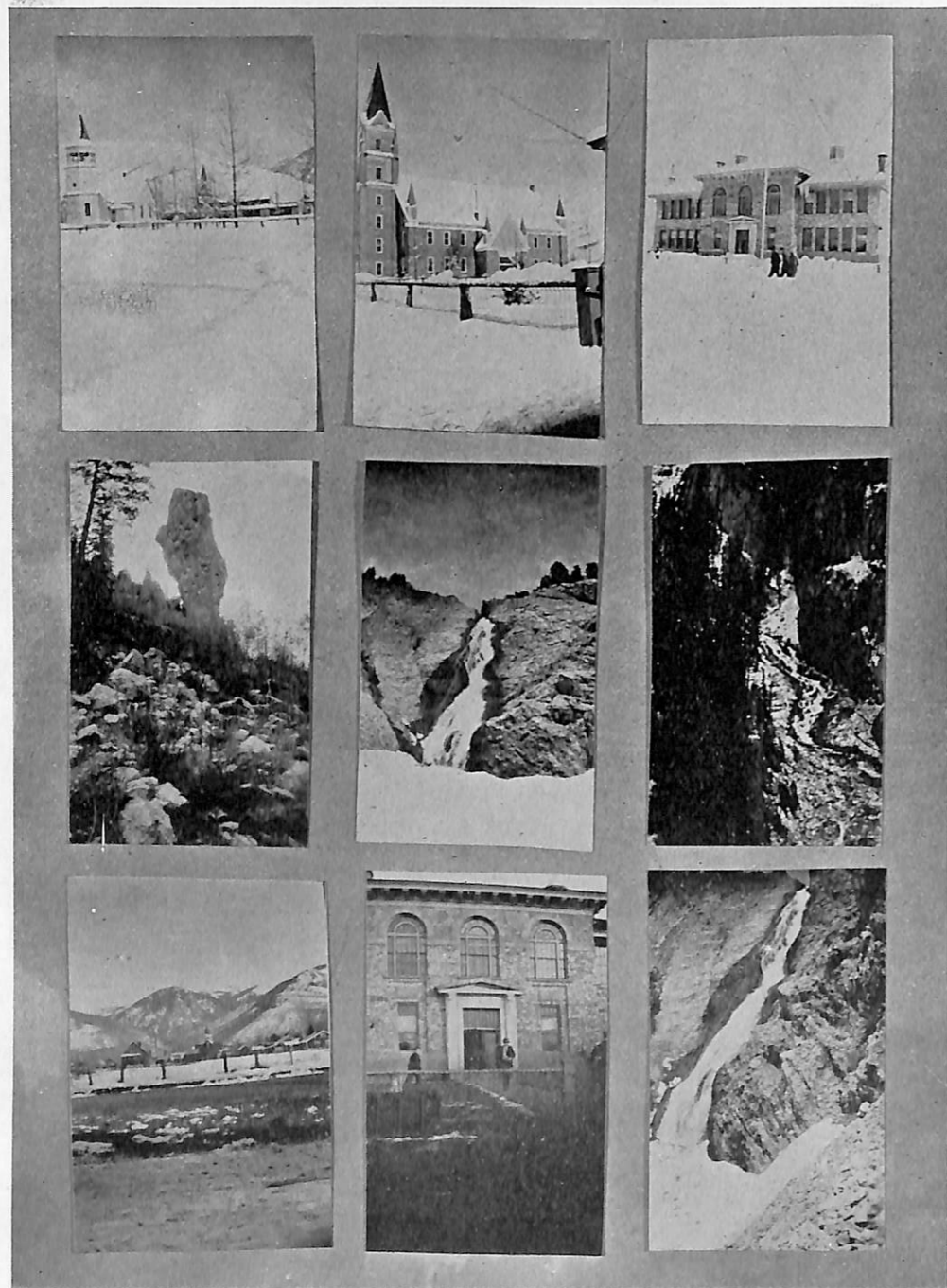


JUNIOR PLAY

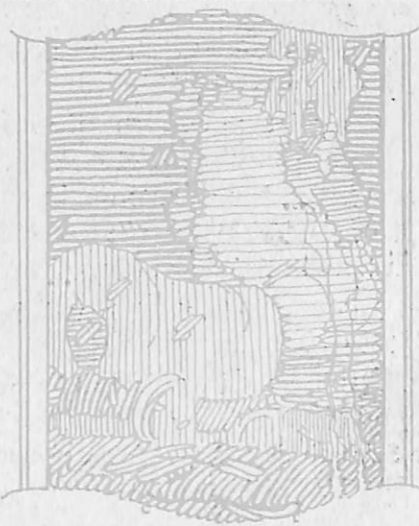
“Clarence”

Mrs. Martyn . . . . .	Marjorie Lynch
Mr. Wheeler . . . . .	Jasper Clark
Mrs. Wheeler . . . . .	Mary Gardner
Della, the maid . . . . .	LaRue Baldwin
Mr. Stem . . . . .	Willard Nield
Clarence . . . . .	Bill Lynch
Violet Pinny . . . . .	Erma Taysom
Cora Wheeler . . . . .	Mildred Baker
Bobby Wheeler . . . . .	Dewey Campbell
Dinwoodie . . . . .	Warren Allred





CALENDAR



## SCHOOL CALENDAR 1926-27

- SEPT. 1—Teachers' Institute. Pedagogues give each other the grand stare. Conclusions were a minus quantity.
- SEPT. 6—Another year of toil and torture begin. Registration. New students wonderously gasping in halls.
- SEPT. 7—Grind begins. Students found out who their new teachers were and made the first steps toward getting acquainted.
- SEPT. 10—First assembly. On this day each teacher was given a chance to make their debut as preachers. It was decided they could get by in a pinch.
- SEPT. 17—Opening dance. Mr. Christenson and Miss Frazer were seen to leave the dance early. For what purpose? They did not return that night.
- SEPT. 24—The Freshies made their debut at their frolic. They romped about and played tag during the intermission.
- SEPT. 24—Class elections. Campaigning ends and the class leaders for 1926-27 were chosen.
- SEPT. 27—Freshmen Initiated. First law given to Freshman, "Thou shalt not enter the building through the front door."
- OCT. 1—Seniors entertained Student Body at Musical Program.
- OCT. 5—Opening issue of Mt. Star. The Staff proved their ability to put out a first class school paper.
- OCT. 15—Masquerade Ball. First masquerade ball in history of Star Valley. Everyone went away wondering who it was that showed them a good time.
- OCT. 25—Do we keep the Sabbath day Holy? We suspect some did not; judging from the careworn expressions today. Dark circles usually indicate early hours.
- OCT. 28—Normal Hallowe'en Dance and Program. The Ghosts cavoted about. Geo. L. refused to venture out to take Winona home so she stayed until morning.
- Nov. 8—Ticket selling contest starts between Ladies' and Male Glee. The boys proved themselves the better salesmen and so won a supper which the ladies gave them later on.
- Nov. 13—Kemmerer Band Program. This was the finest band program Star Valley ever heard.
- Nov. 19—The Basketball season opened with two victories for the locals over the fast Paris team.
- Nov. 19—After the games the basketball boys had to go home while the rest of us danced.
- Nov. 24—Student body entertained with a Thanksgiving Program.

- Nov. 24—The fast S.V.H.S. five met employes of District.
- Nov. 26—Everyone rejoiced that the pilgrims were so thoughtful. Wilford Roberts was absent the following week on account of overeating.
- DEC. 3—S.V.H.S. Basket Hangers invade Montpelier and wrest from them a victory.
- DEC. 6—Piano Recital presented by the Music Department.
- DEC. 9—"Clarence" Junior play presented.
- DEC. 10—Montpelier Basketeers invade Star Valley but the local boys send them back without the bacon.
- DEC. 15—Assembly. Pep Rally to prepare Basketball team for tour of Paris and Kemmerer.
- DEC. 16—The Flying Dutchman picture show.
- DEC. 17—S.V.H.S. loses to Kemmerer in a hard fought struggle. The locals proved a pretty good match for Kemmerer.
- DEC. 18—S.V.H.S. Basketball loses second game of the season to Paris
- DEC. 22—Assembly. Christmas Program and Matinee Dance.
- DEC. 22-JAN. 3—Blissful period of forgetfulness.
- JAN. 1—Birth of New Year. The usual resolutions were made and duly broken. Bill was one of the Lawbreakers. He had resolved to be in by 1:00 o'clock a. m., but it was fully 2.30 a. m. when Reuel Call passed Bagleys.
- JAN. 3—Dissipation ends and School begins. General saying of "Unprepared," renewed.
- JAN. 5—Christopher Columbus. Picture show. First of a series of historical pictures.
- JAN. 7—First Semester ends. Exams and everyone scrambling for an A.
- JAN. 10—Male quartette chosen.
- JAN. 11—"Jamestown" (picture show). Second of a series of historical pictures.
- JAN. 12—Idella Michaelson wins piano contest.
- JAN. 17—Rachel Burton presented in a piano recital
- JAN. 18—Girls' Trio chosen.
- JAN. 18—"Daniel Boone" (picture show). Presented by the Seminary.
- JAN. 21—S.V.H.S. Basketball team meets Grover in first game of the Mutual Schedule. The boys "brought home the bacon."
- JAN. 21—Assembly given by the Seminary.
- FEB. 2—S.V.H.S. wins practice game from Grover.
- FEB. 3—Debate—First of the interclass series. Sophs vs. Frosh.
- FEB. 3—S.V.H.S. wins Schedule Game from South Ward.
- FEB. 4—Wild West Dance given by the Juniors. Shooting, mutiny, scuffling and loud talking.

- FEB. 7-14—Final elimination of team in the interclass debating series.
- FEB. 9—Lincoln Medal Winner announced. Zelda Eggleston wins the coveted honors.
- FEB. 16—Assembly program furnished by student body.
- FEB. 18—Final production of the Minstrel presented by the Male Glee. This production was presented to, and pleased audiences in both valleys.
- FEB. 22—Washington's Birthday. Praise to his memory. Students take things in their own hands for a time but are finally suppressed.
- FEB. 24—Assembly. Mr. Brown lectures, announces several decrees.
- MAR. 3 to 5—Mutual Tournament. High School Team unable to enter.
- MAR. 7—"The New Klondike" (picture show).
- MAR. 11—Assembly. Mr. Murphy talks.
- MAR. 15—"Moana of the South Seas" (picture show).
- MAR. 16—Mr. Brown gets something off his chest which makes the students feel like real students today.
- MAR. 18—Seniors Rings and Pins arrive.
- MAR. 19—Idella Michaelson and Mrs. Brown leave for Laramie to compete in music contests.
- MAR. 23—Opera tryouts.
- MAR. 24—Art Exhibit. This was Star Valley's first opportunity to witness a collection of world's famous paintings.
- MAR. 29—Clara Bennion presented in a piano recital.
- APRIL 1—Girls' day. Boys are shown what a real time is.
- APRIL 1—Carnival dance given by the Cowboy Club. We had everything that goes along with a Cowboy dance including a very good time.
- APRIL 5—Margaret Burton presented in a Piano recital.
- APRIL 7—Senior party. Geo. Mallory discovered that when dealing with girls, variety was the spice of life. His influence however was extended only to Espessa.
- APRIL 22—S.V.H.S. Junior Prom. Something big, new and different.
- APRIL 29—"The Bohemian Girl" opera presented by Ladies' and Male Glee Clubs.
- MAY 1—Too bad it was Sunday. ('Twas such an ideal day for sluffing).
- MAY 10-12—Oh Ye Finals! Ye lovely little finals! Oh where, oh where is my B average? Oh why, oh why should I not be exempted?
- MAY 12—The Great day is now at hand. Four years have the Seniors waited for this commencement. At last the realization of a dream. One step further completed in life's drama.
- MAY 13—Assembly. Dance sounds the parting knell.  
Finis to the School year of 1926-27.



OUR OWN MOUNTAIN SCENERY—COTTONWOOD LAKE

*"I have a rendezvous with the hills,  
When the slanted radiance their hollows fill  
And the great winds let them be—"*

*Where Quality Counts*



Give us your order for  
COMMENCEMENT PROGRAMS  
GRADUATION CARDS  
DANCE PROGRAMS



*Our Hobby is Good Printing*

Star Valley  
Independent

We Sell The Best

Our Prices are right.  
Our Success is your  
Satisfaction.



Aftonian Gardens

Pool Hall -- Confectionery  
Dance Hall

STUDENTS---

Spend Your Vacation at

Cottonwood Lake

Good roads to Camping, Boating, Fishing

*Star Valley's only Resort*

Entertainment For All -- Open Air Dancing

HERBERT SCHWAB, Proprietor

STAR MEAT &  
GROCERY CO.

Green and Staple Groceries  
Fresh and Cured Meats  
Fish and Fresh Apples in Season

*For Health and Strength  
eat meat,  
in a balanced diet.*

YEAMAN & TOLAND  
PROPRIETORS

AFTON, WYOMING

Golden Rule Dept.  
Store

ED. LEWIS, Proprietor

Everything for everybody

Ready-to-wear  
Furnishings  
Millinery  
Clothing

Linoleum  
Dry Goods  
Carpets  
Shoes  
Bags

*Where Quality is Higher Than Price*

We are ready to serve you

FIRST CLASS ICE CREAM  
COLD, SPARKLING SODAS

We stock good fresh candies, also  
stationery, school supplies, notions,  
drugs and patent medicines.

In fact most everything a Drug  
Store should have, and we appreciate  
your patronage.



Afton Drug Co.

Afton, Wyoming

Artists  
Supplies



Nielson Paint Co.

Afton, Wyoming

# Linford Hardware Co.

*A Square Deal*

Hardware	Glass
Lumber	Dishes
Cement	Oils
Lath	Paints
Shingles	Stoves
Farm Machinery	

PETERS    ::    Diamond    ::    SHOES  
                 Brand

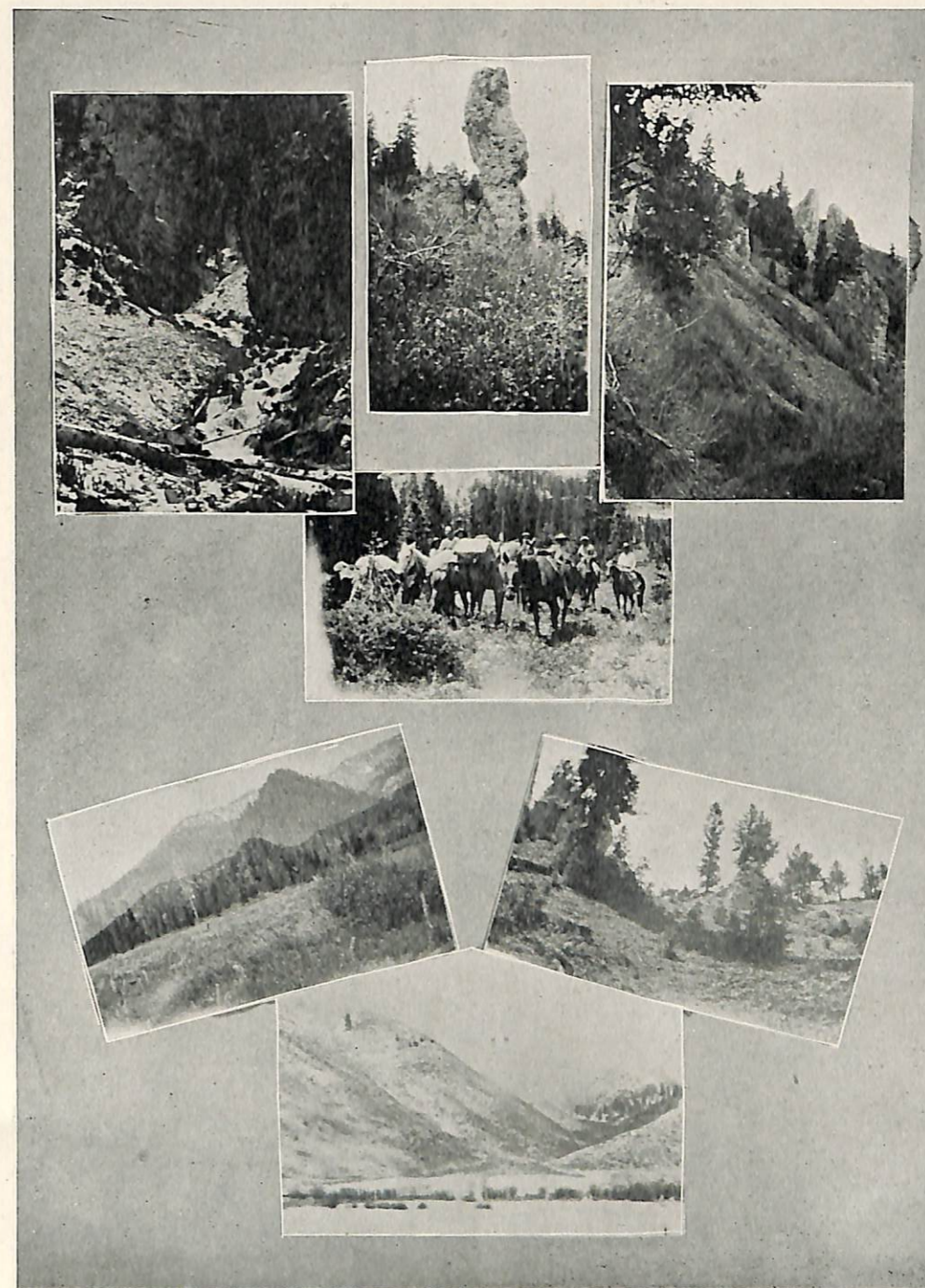
All roads lead to

## Taysom Mercantile Co.

AFTON, WYOMING

THE PLACE TO BUY QUALITY  
MERCHANDISE AT THE LOWEST PRICES

High in Quality  
THANK YOU, CALL AGAIN  
*"See Us First and Save"*





## Why the U. of W.?

Scholastic standards granted national recognition.

Faculty with high percentage of distinguished scholars and scientists.

Courses of study applicable especially to the appreciation of Wyoming and to the solution of Wyoming problems.

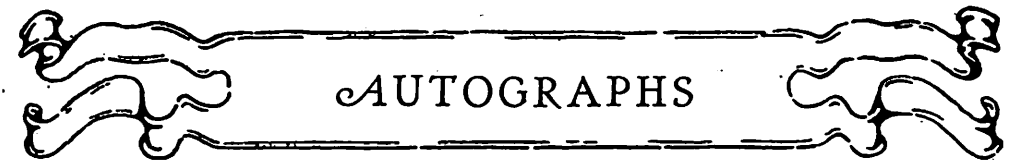
Student body large enough to provide a complete program of collegiate extra-curricular activities but not so large as to preclude study under personal direction of professors of note.

Campus atmosphere of our western democracy with opportunity to establish lasting friendships with the future leaders in the economic and social life of Wyoming.



## The University of Wyoming

The Five Colleges: Liberal Arts, Agriculture, Education,  
Engineering and Law.





*"The Annual's a great invention—  
The School gets all the fame,  
The Printer gets all the money  
The Staff gets all the blame."*